

OVERDRIVE

Plate No.	Part No.	Description	No. per Unit	Remarks
<p>Note:— When ordering overdrive kits for U.S.A. vehicles from Commission No. FDU31254 it will be necessary to order separately speedometer cable, inner 504603/I and speedometer cable, outer 504603/O</p>				
	512767	OVERDRIVE KIT — R.H.S. ONLY	1	
	512768	OVERDRIVE KIT — L.H.S. ONLY	1	
BF1	132115	STUD, adaptor to gearbox case	7	
BF2	208142	MAINSHAFT	1	
BF3	305137	ADAPTOR, gearbox	1	
BF4	106437	GASKET — Adaptor to gearbox case	1	
BF5	WL0208	WASHER — Adaptor to gearbox case	7	
BF6	HN2008	NUT — Adaptor to gearbox case	6	
	JN2108	NUT, jam — Adaptor to gearbox case	1	
BF7	306553	OVERDRIVE UNIT (For details see pages 136-138)	1	
BF8	112626	GASKET — Overdrive unit to gearbox adaptor	1	
BF9	WL0207	WASHER, lock — Overdrive unit to gearbox adaptor	8	
BF10	HN2007	NUT — Overdrive unit to gearbox adaptor	8	
	127740	SHAFT, actuator	1	
BF11	133771	ARM, operating, overdrive switch	1	
BF12	52413	PIN, mills, securing arm to actuator shaft	1	
	120305	WASHER, joint, top cover extension	1	
	106269	WASHER, joint, top cover	1	
BF13	134216	BRACKET assembly, overdrive support	1	} Fitted up to Commission No. FD25745 only, and on FD25776
BF14	136711	PLATFORM assembly, overdrive mounting	1	
BF15	134229	MOUNTING, flexible	1	
	147630	PLATE, support, overdrive	1	} Fitted from Commission No. FD25746 and future except FD25776
	148897	PLATFORM, overdrive mounting	1	
	147632	MOUNTING, rear engine	1	
BF16	HU0807	SETSCREW — Support bracket to overdrive	2	
BF17	WL0208	WASHER, lock — Support bracket to overdrive	2	
BF18	HU0805	SETSCREW — Flexible mounting to support bracket	2	
BF19	WL0208	WASHER, lock — Flexible mounting to support bracket	2	
BF20	HN2008	NUT — Flexible mounting to support bracket	2	
BF21	HU0806	SETSCREW — Flexible mounting to mounting platform	2	
BF22	WP0008	WASHER, plain — Flexible mounting to mounting platform	2	
BF23	WL0208	WASHER, lock — Flexible mounting to mounting platform	2	
BF24	HN2008	NUT — Flexible mounting to mounting platform	2	
BF25	HU0805	SETSCREW — Mounting platform to chassis frame	2	
BF26	WL0208	WASHER, lock — Mounting platform to chassis frame	2	
BF27	HN2008	NUT — Mounting platform to chassis frame	2	
BF28	611938	PLATE, cover, main floor, providing access to overdrive	1	
BF29	YZ3403	SCREW — Securing cover plate	3	
BF30	FJ2444/4	NUT, fix — Securing cover plate	3	

Note:—Items marked thus † are available on our Factory Exchange Unit Scheme

OVERDRIVE

Plate No.	Part No.	Description	No. per Unit	Remarks
OVERDRIVE KIT — continued				
BF31	611974	ESCUTCHEON, flasher and overdrive switch	1	
BF32	609792	BEZEL, overdrive switch	1	
BF33	WN0712	WASHER, shakeproof, overdrive switch	1	
BF34	147668	HARNESS, overdrive	1	
BF35	138323	EXTENSION, overdrive harness — R.H.S. only	1	
BF36	138322	HARNESS, gearbox	1	
BF37	511345	CLIP, gearbox harness to top cover bolt	1	
BF38	615811	CLIP, overdrive harness to bulkhead flange	2	
BF39	126792	RELAY, overdrive	1	
BF40	YZ3504	SCREW — Relay to dash	2	
BF41	508875	WASHER, plain — Relay to dash	2	
BF42	WL0205	WASHER, lock — Relay to dash	2	
BF43	127380	SWITCH, inhibitor	1	
BF44	502146	WASHER, packing — Inhibitor switch to bracket	A/R	
BF45	59474	NUT — Inhibitor switch to bracket	1	
BF46	133770	BRACKET assembly, switch mounting	1	
	HB0708	BOLT, top cover and inhibitor bracket to gearbox	2	
	HB0707	BOLT, top cover to gearbox	5	
BF47	504617/I	CABLE, speedometer, inner — R.H.S.	1	
BF48	504617/O	CABLE, speedometer, outer — R.H.S.	1	
	504621/I	CABLE, speedometer, inner — L.H.S.	1	
	504621/O	CABLE, speedometer, outer — L.H.S.	1	
	504603/I	CABLE, speedometer, inner — L.H.S.	1	} U.S.A. only from } Commission No. FDU31254
	504603/O	CABLE, speedometer, outer — L.H.S.	1	
BF49	120694	ANGLE DRIVE, speedometer	1	
BF50	210985	PROPELLOR SHAFT, frictionless	1	
BF51	129361	BOLT — Propellor shaft to overdrive flange	4	
BF52	TN3208	NUT, nyloc — Propellor shaft to overdrive flange	4	
BF53	603906	NAMEPLATE, "Overdrive"	1	
	FP1012/9	PLATE, fix, nameplate attachment	3	
	143345	TERMINAL BLADE, starter solenoid	1	
BF54	147280	SWITCH, overdrive — Fitted to R.H. side of steering column	1	
	147281	SWITCH, overdrive — Fitted to L.H. side of steering column	1	
	516162	GEARBOX ASSEMBLY (Less top cover extension, gearbox extension and hand lever)	1	
	516169	GEARBOX ASSEMBLY (RECONDITIONED UNIT)	1	
<p>Note:— The above gearbox assemblies comprise mainshaft, Part No. 208142 and all other details in the gearbox section.</p>				

Note:—Items marked thus † are available on our Factory Exchange Unit Scheme

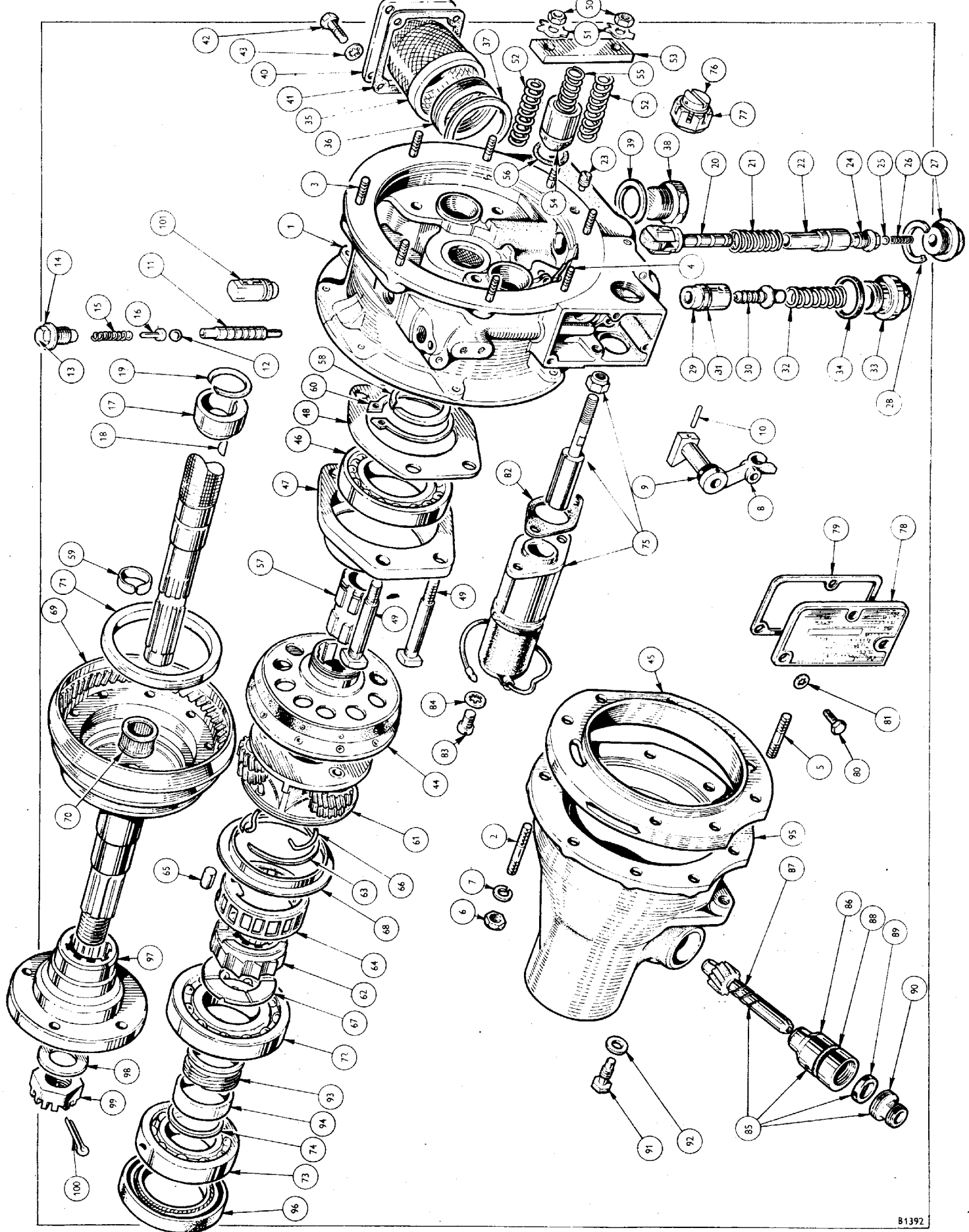


PLATE BG

OVERDRIVE

Plate No.	Part No.	Description	No. per Unit	Description
	306553	OVERDRIVE UNIT	1	
BG1	513197	FRONT CASING ASSEMBLY	1	
BG2	506082	STUD, 1/4" rear casing to main casing	6	
BG3	506083	STUD, 1/4" — Main casing to gearbox	7	
BG4	506105	STUD, 1/4" — Main casing to gearbox	1	
BG5	506103	STUD, 1/4", rear casing to main casing	2	
BG6	HN2007	NUT, 1/4" — Rear casing to main casing and main casing to gearbox	16	
BG7	WL0207	WASHER, spring, 1/4" — Rear casing to main casing and main casing to gearbox	16	
	506101	JOINT, paper	1	
BG8	506064	OPERATING VALVE LEVER ASSEMBLY	1	
BG9	500594	'O' RING	1	
BG10	52413	PIN, mills	1	
BG11	513218	VALVE, operating	1	
BG11	138926	VALVE, operating	1	For special cold weather conditions
BG12	BL0020	BALL, 5/16"	1	
BG13	506117	PLUG, valve	1	
BG14	500568	WASHER, valve plug	1	
BG15	506070	SPRING, valve	1	
BG16	500591	PLUNGER, ball valve	1	
BG17	513216	CAM, oil pump operating	1	
BG18	KW0316	KEY, woodruff — Securing cam	1	
BG19	137308	RING, spring — Securing cam	1	
BG20	513196	OIL PUMP PLUNGER ASSEMBLY	1	
BG21	500633	SPRING, for plunger	1	
BG22	513222	BODY, pump	1	
BG23	506076	SCREW, retaining pump body	1	
BG24	513192	VALVE BODY assembly, non-return	1	
BG25	BL0014	BALL, 7/32", in valve body	1	
BG26	513207	SPRING, valve	1	
BG27	513206	PLUG, valve	1	
BG28	506118	WASHER, for plug	1	
	513193	RELIEF VALVE KIT	1	
BG29	Not serviced	BODY, valve	1	
BG30	Not serviced	PLUNGER	1	
BG31	506129	'O' RING	1	
BG32	Not serviced	SPRING	1	
BG33	Not serviced	PLUG	1	
BG34	506118	WASHER, plain, on plug	1	
BG35	513202	OIL FILTER	1	
BG36	513205	MAGNET, filter	1	
BG37	506107	PLATE, sealing, oil filter to casing	1	
BG38	506114	PLUG, drain	1	
BG39	506118	WASHER, drain plug	1	
BG40	506097	PLATE, side cover	1	
BG41	506098	JOINT, for plate	1	
BG42	HU0706	SCREW, set, 1/4" — Side cover plate to casing	4	
BG43	WN0707	WASHER, shakeproof — Side cover plate to casing	4	

Note:—Items marked thus † are available on our Factory Exchange Unit Scheme

OVERDRIVE

Plate No.	Part No.	Description	No. per Unit	Remarks
OVERDRIVE UNIT — continued				
BG44	513200	CLUTCH SLIDING MEMBER ASSEMBLY (With Linings)	1	
BG45	513228	RING, clutch brake	1	
BG46	506112	BEARING, ball, clutch thrust	1	
BG47	506081	HOUSING, clutch thrust bearing	1	
BG48	506104	PLATE, retainer, clutch thrust bearing	1	
BG49	513203	BOLT — Securing thrust bearing housing	4	
BG50	513227	NUT — Securing thrust bearing housing	4	
BG51	500642	WASHER, tab — Securing thrust bearing housing	4	
BG52	513199	SPRING, clutch	4	
BG53	506084	BRIDGE PIECE, clutch	2	
BG54	513220	PISTON — Operating clutch	2	
BG55	513219	SPRING, piston — Operating clutch	2	
BG56	506130	“O” RING, on piston — Operating clutch	2	
BG57	506044	SUNWHEEL ASSEMBLY	1	
BG58	506091	RING, snap	1	
BG59	513223	RING, spring	1	
BG60	515356	CIRCLIP	1	
BG61	513194	PLANET CARRIER ASSEMBLY	1	
	513224	BEARING, needle roller	6	
	500412	PIN, mills, securing bearings	3	
BG62	513209	FREEWHEEL, inner member	1	
BG63	513210	RING, spring	1	
BG64	502559	CAGE, roller	1	
BG65	506063	ROLLERS, steel, in cage	1 set	
BG66	513208	SPRING, for cage	1	
BG67	500613	WASHER, thrust	1	
BG68	513215	PLATE, retaining	1	
BG69	513195	ANNULUS ASSEMBLY	1	
BG70	506113	BEARING, needle roller	1	
BG71	Not serviced	OUTER MEMBER, freewheel	1	
BG72	506111	BEARING, ball, front — Annulus support in rear casing	1	
BG73	513229	BEARING, ball, rear — Annulus support in rear casing	1	
BG74	513214/1	ADJUSTMENT WASHER, correcting end float (.105")	A/R	
BG74	513214/2	ADJUSTMENT WASHER, correcting end float (.100")	A/R	
BG74	513214/3	ADJUSTMENT WASHER, correcting end float (.095")	A/R	
BG74	513214/4	ADJUSTMENT WASHER, correcting end float (.090")	A/R	

Note:—Items marked thus † are available on our Factory Exchange Unit Scheme

OVERDRIVE

Plate No.	Part No.	Description	No. per Unit	Remarks
OVERDRIVE UNIT — continued				
BG75	512114	SOLENOID ASSEMBLY	1	
	514200	SCREW assembly, solenoid adjusting (Comprising: BG76 and BG77)	1	
BG78	506109	SIDE COVER PLATE	1	
BG79	513204	WASHER, joint, side cover plate	1	
BG80	513226	SCREW, hex — Securing side cover plate	3	
BG81	WN0705	WASHER, shakeproof — Securing side cover plate	3	
BG82	513201	WASHER, joint, solenoid to casing	1	
BG83	513225	SCREW, set, securing solenoid	2	
BG84	WN0705	WASHER, shakeproof, under set screw	2	
SPEEDOMETER DRIVE ASSEMBLY				
BG85	506067	SPEEDOMETER DRIVE ASSEMBLY	1	
BG86	506066	BEARING assembly, speedometer	1	
BG87	506119	GEAR, driven	1	
BG88	506115	“O” RING	1	
BG89	Not serviced	SEAL, oil	1	For replacement order 506066
BG90	Not serviced	END, screwed	1	
	501606	PIN, mills, 1/16”	1	
BG91	506071	SCREW, locking	1	
BG92	506108	WASHER, on locking screw	1	
BG93	506099	GEAR, driving, on main shaft	1	
BG94	513211	TUBE, spacing, on main shaft	1	
REAR CASING ASSEMBLY				
BG95	513198	REAR CASING ASSEMBLY	1	
BG96	513231	OIL SEAL	1	
BG97	513212	COUPLING, flange	1	
BG98	WP0024	WASHER, plain — Securing coupling flange to annulus	1	
BG99	57868	NUT, slotted — Securing coupling flange to annulus	1	
BG100	PC0012	COTTER — Securing coupling flange to annulus	1	
BG101	502560	BREATHER — Securing coupling flange to annulus	1	

Note:—Items marked thus † are available on our Factory Exchange Unit Scheme